



Online store [WWW.LYNXGEAR.LV](http://WWW.LYNXGEAR.LV)  
Company: SIA LATLYNX  
info@lynxgear.lv, +371 26159668  
Reg. No. 45403038162, VAT Reg. No.  
LV45403038162,  
Legal address: Baznicas iela 8,  
Aizkraukle, Aizkraukles novads,  
LV-5101, LATVIJA  
Bank Account: LV87UNLA0050021387494  
AS SEB Bank, SWIFT: UNLALV2X

---

## ORDER CONFIRMATION

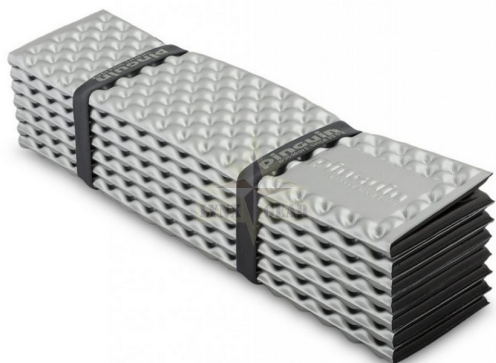
---

Not Rated Yet

**Sales price 49,95 €**

Salesprice with discount

Incl. VAT 21%: 8,67 €



### Description

Very lightweight (470 g) foam folding mattress. Thanks to the corrugation of the surface of the mattress, higher comfort is achieved with a lower weight of the mattress.

The reflective aluminium layer on the top reflects radiating body heat and helps to increase thermal comfort. If you are unsure, sleep on the "silver" layer, not the other way around.

Because the deformations of the mattress fit together, we also saved on the size when folded, although it is still quite large. On the other hand, due to its weight and moisture resistance, it's no problem to clip it anywhere on the outside of your pack, so its volume doesn't limit you.

Since the mattress does not inflate, it is not prone to tears, burns or punctures, respectively, these damages will not affect the quality of your sleep.

This mattress can also be used as a seat cushion (folded or semi-folded), a damp-proof seat pad or a shortened mattress with its own cushion.

- Dimensions (length x width x thickness): 185 x 55 x 1.5 cm.
- Folded size: 55 x 13 x 13 cm.
- Weight: 470 g
- Type: IXPE foam (foamed polyethylene foam) + Aluminium foil
- Estimated value of heat resistance - 2 R
- 4 season mat



Online store [WWW.LYNXGEAR.LV](http://WWW.LYNXGEAR.LV)

Company: SIA LATLYNX

info@lynxgear.lv, +371 26159668

Reg. No. 45403038162, VAT Reg. No.

LV45403038162,

Legal address: Baznicas iela 8,

Aizkraukle, Aizkraukles novads,

LV-5101, LATVIJA

Bank Account: LV87UNLA0050021387494

AS SEB Bank, SWIFT: UNLALV2X

---

## ORDER CONFIRMATION

---

Brand's country - Czech Republic.