



Online store WWW.LYNXGEAR.LV
Company: SIA LATLYNX
info@lynxgear.lv, +371 26159668
Reg. No. 45403038162, VAT Reg. No.
LV45403038162,
Legal address: Baznicas iela 8,
Aizkraukle, Aizkraukles novads,
LV-5101, LATVIJA
Bank Account: LV87UNLA0050021387494
AS SEB Bank, SWIFT: UNLALV2X

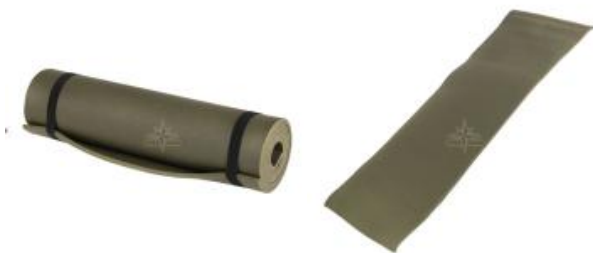
ORDER CONFIRMATION

Not Rated Yet

Sales price 29,95 €

Salesprice with discount

Incl. VAT 21%: 5,20 €



Material

100% Polyethylene foam

Dimensions

190 × 60 × 1 cm

Weight

488 g

Construction

Closed-cell foam

Color

OD (Olive Drab)

Intended Use

- Camping and trekking
- Bushcraft and survival training
- Military and tactical field use
- Emergency and backup sleeping insulation
- Ground insulation inside tents or shelters

Frequently Asked Questions

No. 1: This is a sleeping pad, not an inflatable sleeping pad that does not require inflation and cannot puncture.

No. 2: The polyethylene foam is closed-cell and rot-resistant, meaning it does



Online store WWW.LYNXGEAR.LV
Company: SIA LATLYNX
info@lynxgear.lv, +371 26159668
Reg. No. 45403038162, VAT Reg. No.
LV45403038162,
Legal address: Baznīcas iela 8,
Aizkraukle, Aizkraukles novads,
LV-5101, LATVIJA
Bank Account: LV87UNLA0050021387494
AS SEB Bank, SWIFT: UNLALV2X

ORDER CONFIRMATION

not absorb moisture.

The pad then pad rolled and secured using the integrated straps, allowing it to be attached to a backpack or carried externally.

Yes. While with the closed ground foam provides basic insulation from cold and damp ground conditions.

Yes. It is a versatile and can be used as an emergency mat for use as a seat pad or emergency insulation.

Glossary

- **Closed-cell foam** - Foam structure that prevents air and water penetration, offering durability and insulation.
- **Polyethylene (PE)** - Lightweight, durable plastic material commonly used in outdoor gear.
- **OD (Olive Drab)** - Traditional military green color.

Manufacturer Information (GPSR)

Sturm Handels GmbH

Arneburger Str. 37

39590 Tangermünde

Germany

Email: This email address is being protected from spambots. You need JavaScript enabled to view it.

```
document.getElementById('cloak45255231f2036e7f46403941467bd3a6').innerHTML = ''; var prefix = 'ma' + 'il' + 'to'; var path = 'hr' + 'ef' + '='; var addy45255231f2036e7f46403941467bd3a6 = 'info' + '@'; addy45255231f2036e7f46403941467bd3a6 = addy45255231f2036e7f46403941467bd3a6 + 'sturm-miltec' + '.' + 'de'; var addy_text45255231f2036e7f46403941467bd3a6 = 'info' + '@' + 'sturm-miltec' + '.' + 'de'; document.getElementById('cloak45255231f2036e7f46403941467bd3a6').innerHTML += '<a href="mailto:info@sturm-miltec.de">+addy_text45255231f2036e7f46403941467bd3a6+</a>';
```

Specifications may change without notice as part of continuous product development.