



Online store WWW.LYNXGEAR.LV
Company: SIA LATLYNX
info@lynxgear.lv, +371 26159668
Reg. No. 45403038162, VAT Reg. No.
LV45403038162,
Legal address: Baznicas iela 8,
Aizkraukle, Aizkraukles novads,
LV-5101, LATVIJA
Bank Account: LV87UNLA0050021387494
AS SEB Bank, SWIFT: UNLALV2X

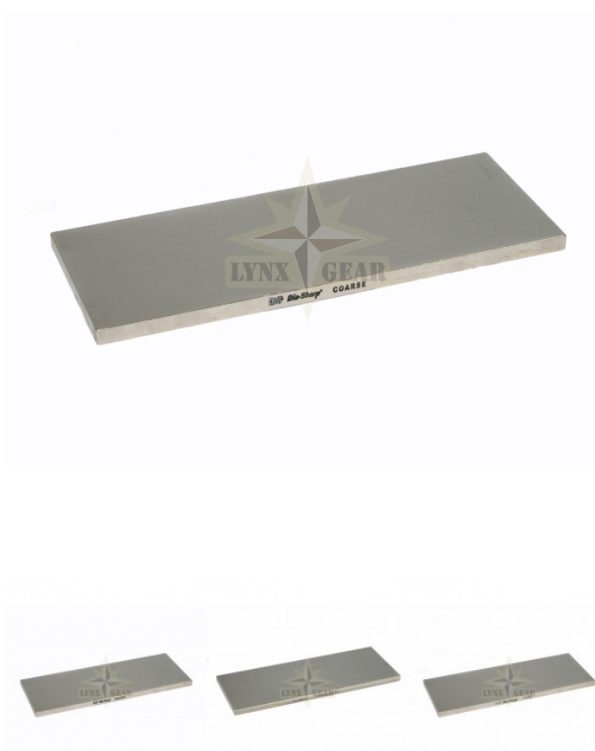
ORDER CONFIRMATION

Not Rated Yet

Sales price 213,00 €

Salesprice with discount

Incl. VAT 21%: 36,97 €



1-4 Weeks



Description

Guaranteed not to hollow or groove, DMT®'s precisely engineered Dia-Sharp® Bench Stone with continuous diamond surface assures consistent, even sharpening every time. The 10" length is perfect for long or short knives and other tools and provides cutting edge performance for a quick, keen edge on small contact areas and pointed tools. Includes non-skid rubber feet. Diamond grit clearly marked on side of stone. The surface of the stone measures 10" long by 4" wide. Choose from the following grits: extra-fine, fine, coarse.

Grit Descriptions:

- Coarse diamond (45 micron / 325 mesh) to quickly restore a neglected edge.
- Fine diamond (25 micron / 600 mesh) for a razor sharp edge.
- Extra-Fine diamond (9 micron / 1200 mesh) to polish and refine a razor edge after sharpening with a coarser diamond stone.

Sharpening with diamonds is fast and easy. No messy oils needed—sharpen dry or with water. Durable construction will provide years of consistent performance and reliable service. For proper tool maintenance, woodworkers, chefs and other professionals rely on the superior quality and versatility of DMT® products. Made in USA.



Online store WWW.LYNXGEAR.LV
Company: SIA LATLYNX
info@lynxgear.lv, +371 26159668
Reg. No. 45403038162, VAT Reg. No.
LV45403038162,
Legal address: Baznīcas iela 8,
Aizkraukle, Aizkraukles novads,
LV-5101, LATVIJA
Bank Account: LV87UNLA0050021387494
AS SEB Bank, SWIFT: UNLALV2X

ORDER CONFIRMATION

- Sharpening surface accommodates range of edges– from large knives to small pointed tools
- Sharpens knives faster than conventional stones with DMT®'s monocrystalline diamond surface
- No oil is needed-sharpen dry or with water
- Durable construction will provide years of consistent performance and reliable service